



BIN HARKIL TRADING CO. LIMITED
CRUSHING & MINING

Committed To Quality. Committed To You.

Contents.

1	Contents
2	Bin Harkil Trading Co. Ltd (Introduction)
3	Crusher Plant Layout
4-5	Primary Crushing Plant
7	Secondary Crushing plant
8-9	Symon cone Crusher
10-13	Bin Harkil Machinerics
14-19	Crusher Spareparts
20-21	Hardox wearparts center
22	Rock Drilling Tools & Equipment
23	Tire Protection

BIN HARKIL TRADING CO. LTD.

Bin Harkil Crushers Established 2013, though Bin Harkil Trading Co. Ltd. is a family business started 1932, the company enjoyed immense growth in its business and diverse activities. The line of business activities include manufacturing & import of Spare Parts of Crusher, Rock Drilling Tools & Equipments for Quarry, Mines and Water Well Drilling, Applications, Construction Machinery & Spares, "Robit" brand DTH Hammers & Button Bits, "BH" make Concrete Mixers, Industrial application and Water well drilling Rigs, Conveyor Belts, Wire Mesh /screens , Engineering Products & Machinery, Consumables & General Merchandise. The company has been Importing Spare Parts for Crusher, produced to international standards and specifications. The manufacturing range includes "BH" brand Buckets . Also "Robit" brand DTH Hammers & Button bits for mining blast hole & drilling applications.

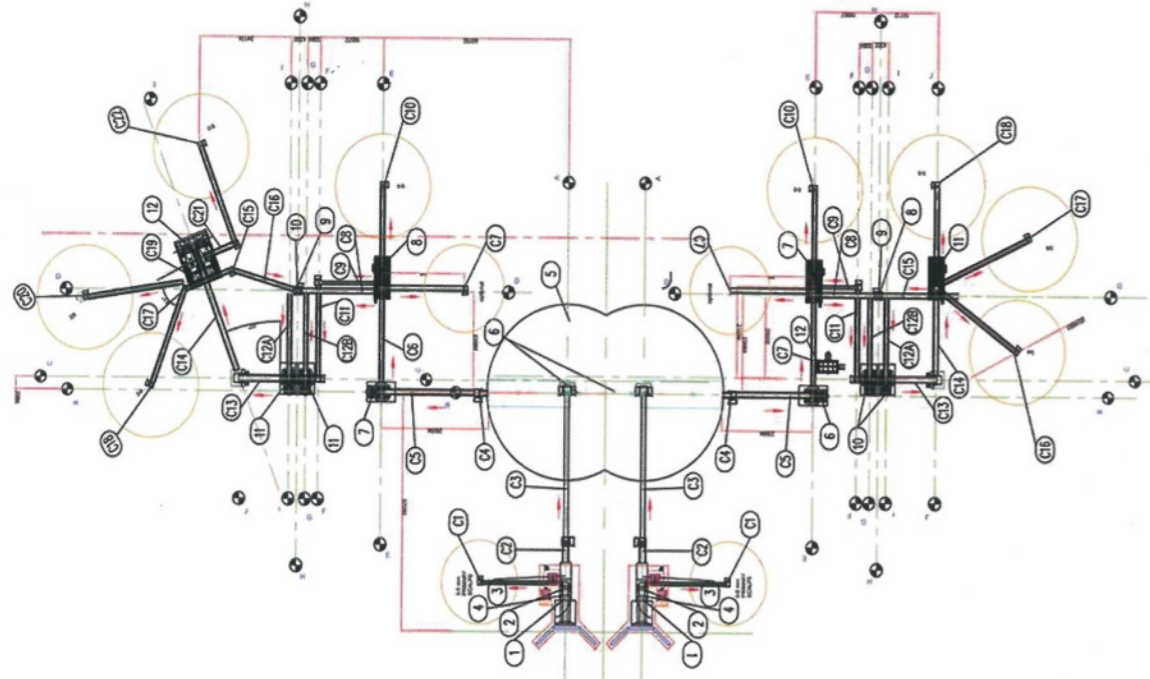
We are the distributors of several companies who are manufacturing construction machinery such as Screen Mesh , Conveyor Belts, Manganese , Rollers , JawCrushers, Impact Crushers, Vibrating Feeders, Vibrating Screens, Conveyor Systems etc. and all types of equipments. It is our company policy to emphasize on providing best international quality products to our loyal buyers at most reasonable rates within the stipulated delivery period. The company has got substantial technical staff having expertise in different fields and Products in which the company deals for quality control during the procurement and packing process. The main motto and policy of the company is to provide its customers/client's world-class products and services quality wise and cost wise within time binding period.



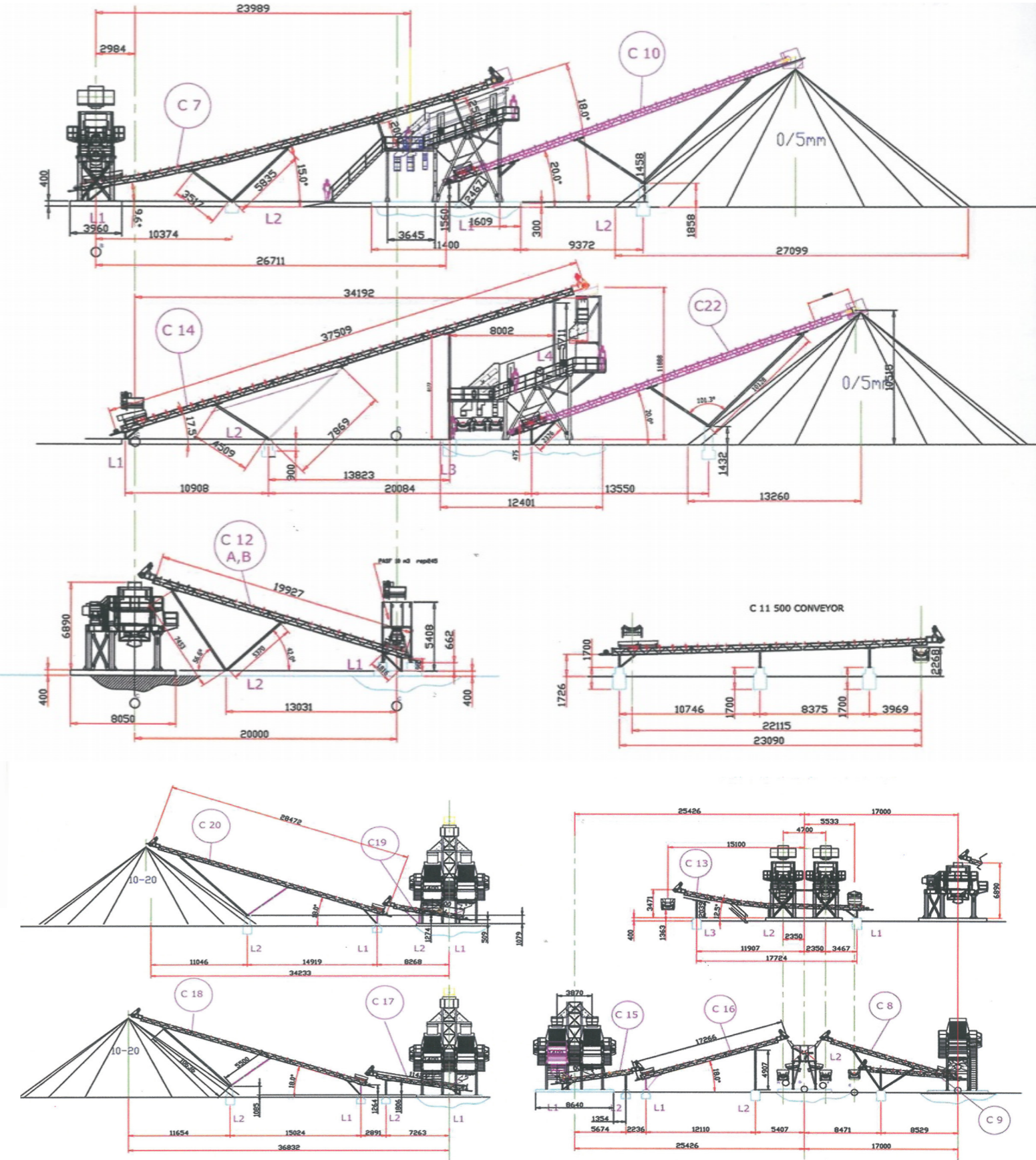
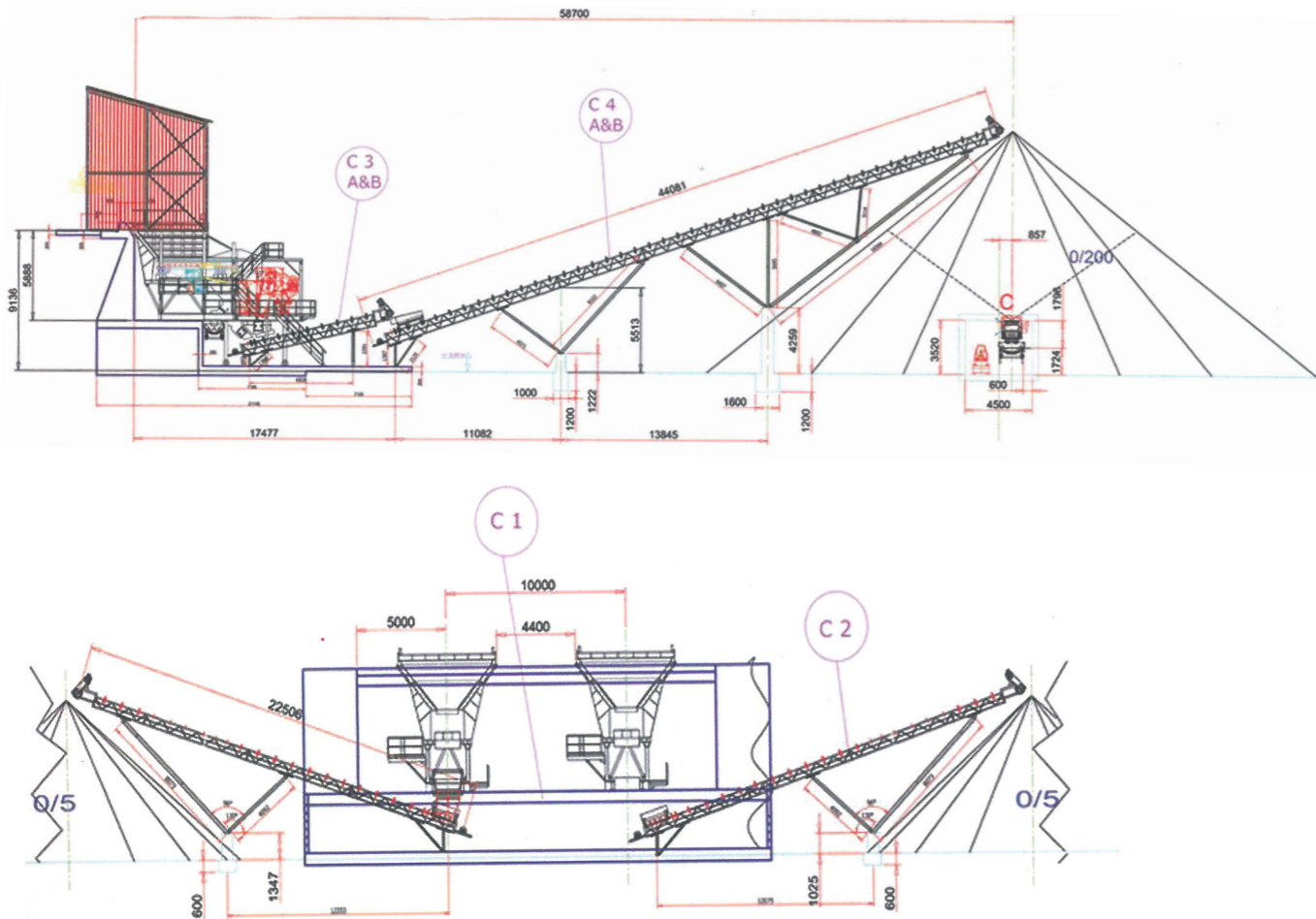
**NAJRAN MINING - AGGREGATES
(1000-TPH)**

CRUSHER PLANT LAYOUT

TOP VIEW



SIDE ELEVATION



PRIMARY CRUSHING PLANT

Primary crushers are characterized by the maximum size of boulders that they can accept and secondary crushers are defined by their reduction ratio.



HOPPER



FEEDER



JAW CRUSHER

SECONDARY CRUSHING PLANT

Secondary crushing is the second stage of material processing following its initial reduction.



CONE CRUSHER



TWIN SCREEN



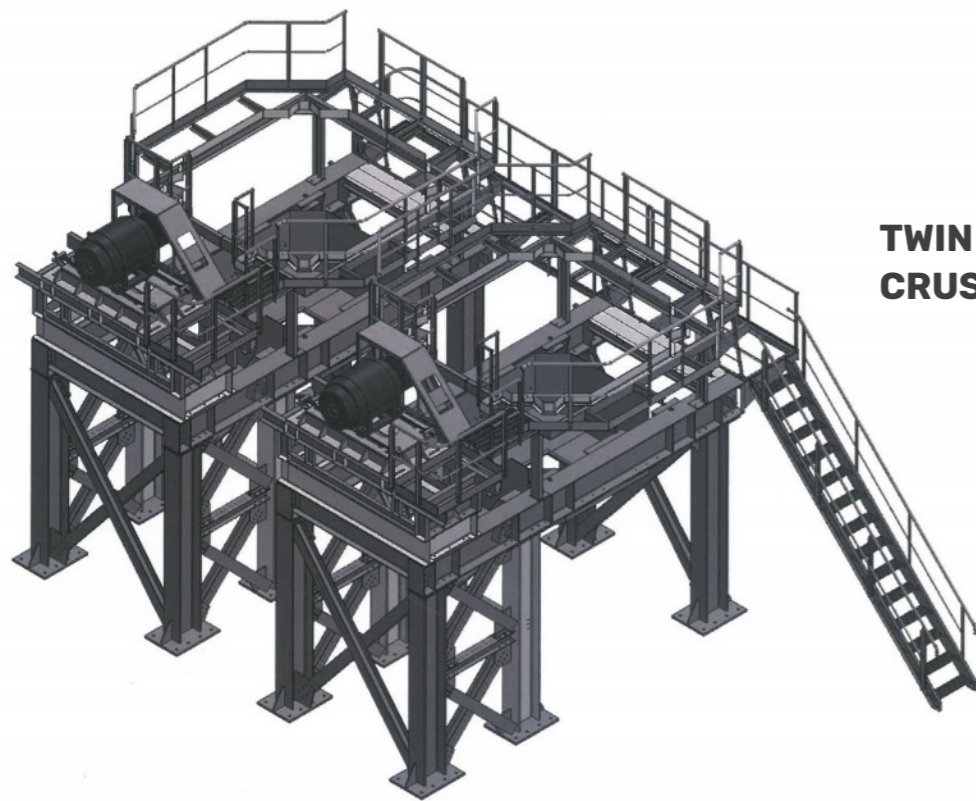
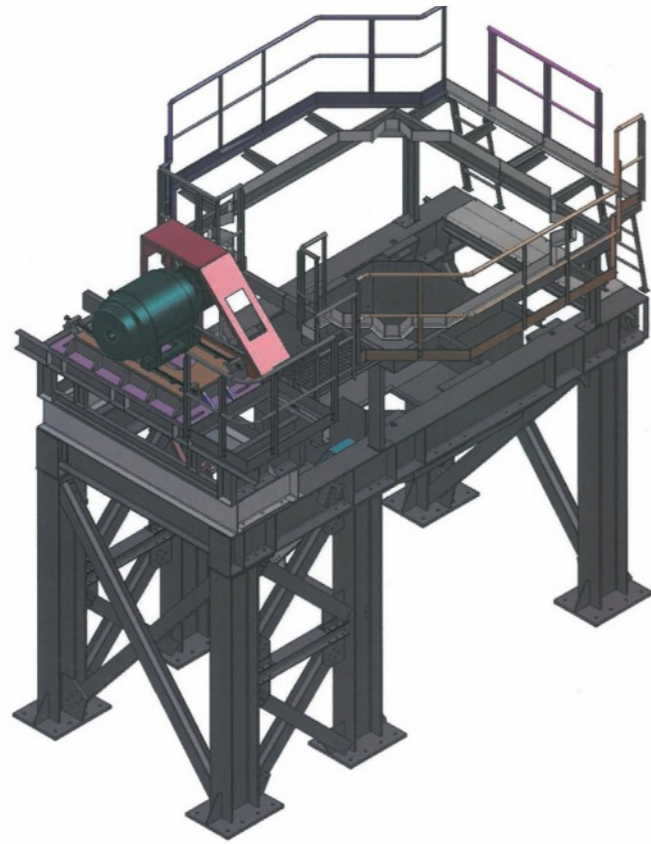
SILLO



CONVEYOR SYSTEM

SYMON CONE CRUSHER

SINGLE CONE CRUSHER LAYOUT



TWIN CONE CRUSHER LAYOUT



BIN HARKIL MACHINERIES

Bin Harkil Trading co. Ltd. uses high quality machineries to provide their clients a good and effecient crushing plant that will last.



Cone Crusher

A cone crusher breaks rock to smaller size by squeezing the rock between an eccentrically grating spin, made by umbrella like mass of steel which is covered by a wear resistant manganese mantle and the enclosing concave bowl covered by a manganese bowl liner.

As rock enters the top of the cone crusher, it becomes wedged and squeezed between the mantle ans the bowl liner. Large pieces of rocks are broken once and then fall to lower position where they are broken again. This Process continuess until the pieces are small enough to fall through the narrow opening between the mantle and the bowl liner located at the bottom of the cone.



Jaw Crusher

Jaw crusher consists of a set of vertical jaws, one being fixed or stationary and the other is moving or mobile. The back and forth motion of the moving jaw are relative to its mechanism which causes the crushing motion.

Bin Harkil Trading co. Ltd. is supplying the Saudi Arabian market with single toggle jaw crushers of different sizes and capacity. These machines are constructed of heavy duty fabricated plate frames with reinforcing ribs throughout. Bin Harkil also considers high quality cast steel components and durable wear parts as a basis for exceptional performance, cost efficiency and low cost per ton.



Vibrating Girizzly Feeder

Electro Mechanical Feeders driven by vibratory motors have been used for years in feeding and conveying all types of bulk materials. The EMF can either be installed below hoppers and silos to feed material continuously or transitional, or can be used simply to transfer material.

EMF is driven by 2 counter-rotating vibratory motors. The stroke of these feeders can be adjusted by changing the setting of the motors. The capacity can be altered during operation by varying the speed of the motors when using a frequency controller.

The EMF is generally made from MS plate and is lined with replaceable wear resistant liners bolted in position.

Inclined Machine

Inclined Screens are durable and dependable. The essence of the inclined vibrating screen is the heavy-duty eccentric shaft assembly where bearings are pressed into the bearing housing and the inner competition floats on the shaft.

A number of inclined screens have been and still are being supplied and commissioned by Bin Harkil, to various locations and of different applications inside the Saudi Arabian Region. Inclined screens are available in single or dual mechanism, all depends on the size and capacity of the materials to be processed.



Silo

Silos are structures for storing bulk materials and are commonly used for bulk storage of grain, coal, cement, carbon black, woodchips. Three types of silos are in widespread use today: tower silos, bunker silos, bag silos.

Bin Harkil Co. Ltd uses their own design of silos which suits in every crusher plant that they made.



Conveyor system

Conveyor Systems like belt conveyor type is widely used in mineral industry. Underground mine transport, opencast mine transport and processing plants deploy conveyor belts of different kinds to adopt the specific job requirements.

Bin Harkil design process is a systematic process, aimed at developing an appropriate reliable engineering solution with optimized life cycle costs, without compromising on safety or quality.



Control Panel

Control Panel is a flat and often vertical area where control or monitoring instruments are displayed. They are found in factories to monitor and control machines or production lines and in places such as nuclear power plants, ships, aircraft and mainframe computers.

Older control panels are mostly equipped with push buttons and analog instruments, whereas today in many cases touchscreens are used for monitoring and control purposes.



SAUDI ARABIAN RAILS (SARs) CTW 200

CRUSHER SPARE PARTS

When choosing spare parts for your crusher, think quality & long-term. Bin Harkil's parts division keep your crusher working at peak performance . Correct spare parts are critical to the successful operation of any process equipment , our genuine parts, therefore outperform imitations and with a longer lifetime, saving time and costs.

Our customized spare parts solutions help you improve equipment reliability and availability , and support you in optimizing plant performance and total cost of ownership.

Our goal is to build a proactive partnership with you based on a deep understanding of your operations. We aim to make part identification , ordering, supply , and demand planning as smooth , efficient , and cost -effective as possible.



MANGANESE WEAR PARTS

The bottom of the pitman is supported by a reflex-curved piece of metal called the toggle plate. It serves the purpose of allowing the bottom of the pitman to move up and down with the motion of the eccentric shaft as well as serve as a safety mechanism for the entire jaw.



BEARINGS

Large Diameter Roller, Needle and Ball bearings for Crushers – Body and lever (pitman), robust and heavy duty to give best performance and life. As well as all types of bearings of different sizes of fineness, easy maintenance and less operating cost. Suitable for all applications in machines and equipments, Gear Boxes, Conveyor Drums, Rolls, Idlers and many more general purpose application.



SCREENING MEDIA SELF-CLEANING MESH (ANTICLOGGING) POLYTHENE & RUBBER SCREENING MEDIA HARDOX SCREEN PANELS

Woven wire mesh screens made out of high tensile steel (Spring Steel-Grade) manufactured to suit individual requirements and specifications of steel grade, wire diameter, mesh aperture sizes, length & width, plain ends, ends with hooks, bent ends etc., specially for aggregate industry, quarries and mines. Also available fine mesh in stainless steel and other metals.



CONVEYOR BELTS & CONVEYOR SYSTEMS

Reliable and heavy-duty conveyor belts in 2/3/4/5 ply quality with M-24 in grade, Nylon and EP type Belts, for application in Quarries, Mines and construction / Aggregate Industry. We can also supply custom-made conveyor systems tailored to specific requirements of clients.



IDLER ROLLS & RETURN IDLER ROLLS FOR CONVEYOR BELT SYSTEM

Reliable and heavy-duty idlers and rolls for replacement and trouble-free maintenance.



FEEDERS, VIBRATING SCREENS & STORAGE HOPPERS

Reliable and heavy-duty quality equipments in all sizes and specifications to suit existing capacities of your stone crushing plants.



V BELTS & TIMING BELTS

Crusher transmission is a common drive way, which belongs to the flexible friction drive, by using the v-belt torque to change the rotate speeds. All types, in all sections and grades.



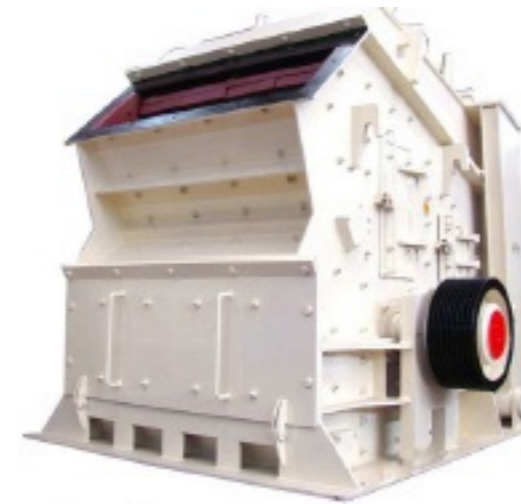
JAW CRUSHER

A Jaw Crusher is one of the main types of primary crushers in a mine or ore processing plant. The size of a jaw crusher is designated by the rectangular or square opening at the top of the jaws (feed opening). Primary jaw crushers are typically of the square opening design, and secondary jaw crushers are of the rectangular opening design.



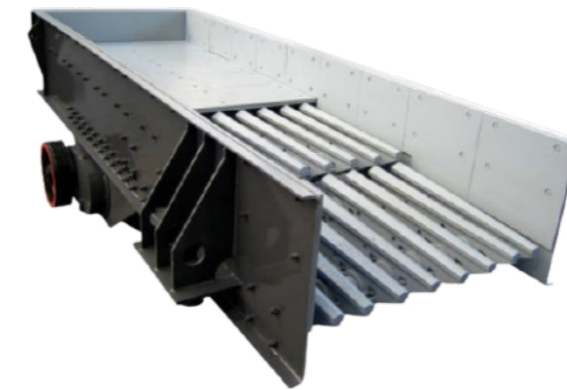
CONE CRUSHER

A Cone Crusher is a compression type of machine that reduces material by squeezing or compressing the feed material between a moving piece of steel and a stationary piece of steel. Final sizing and reduction is determined by the closed side setting or the gap between the two crushing members at the lowest point.



IMPACT CRUSHER

Used for the production of high quality, high strength cubical shaped aggregates in secondary or tertiary, low abrasion applications, No shear or compressive crushing action takes place and every stone is broken by impact forces at its weakest point to provide an exceptionally strong and well shaped product.



GRIZZLY FEEDER

SANLAND heavy-duty vibrating Grizzly Screen have good performance in the mining, construction, road building, bridge construction, and quarrying, recycling, aggregates and cement industries. Almost all kinds of minerals and rocks and some other materials processing plants can use the vibrating feeder.



PAN FEEDER

Vibrating Screen / Linear Vibrating

It is the mineral ore and rocks processing plants, it can send materials to crusher evenly and continuously, it can screen materials roughly, increasing the practical handling capacity of the whole production line.



ELECTRO MECHANICAL FEEDER

Crusher transmission is a common drive way, which belongs to the flexible friction drive, by using the v-belt torque to change the rotate speeds. All types, in all sections and grades



SCREENS

Linear vibrating screens are used to clearly separate all manner of different fractions. Or in technical jargon: Materials are classified accurately. Thus, in accordance with the standard screening principle, ore, coal, coke sinter, pellets or rocks, for instance, are screened and clearly separated in very large quantities.



WASHING PLANTS CDE PLANTS

A comprehensive range of wet processing equipment for quarries, mines and recycling operations



MOBILE CRUSHERS FINLAY

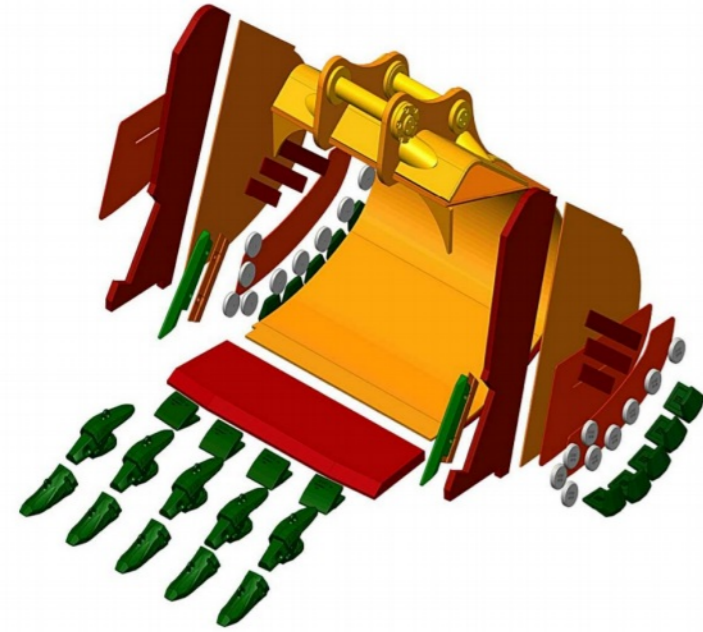
Finlay Mobile Crushers boast versatility and flexibility in application as well as in terms of movement in comparison to stationary crushing plants. Finlay has the right mobile crusher to meet your material reduction requirements in quarrying, mining, demolition and recycling applications.



HARDOX preventing sliding wear in industries active in quarries, mining, cement, energy, steel mills, recycling and other areas where abrasive materials require extremely hard surfaces.

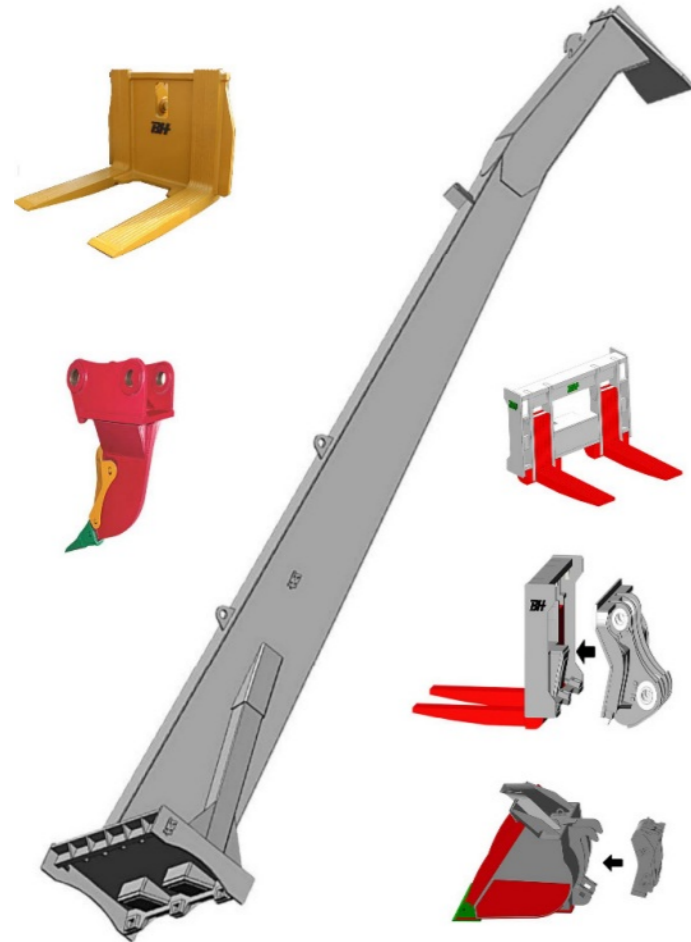
If you want to reduce your component thickness, improve service life and consistent wear resistance than approach BH-HARODX wearpart center in Jeddah-K.S.A





BUCKET ACCESSORIES

A comprehensive range of wet processing equipment for quarries, mines and recycling operations



EARTH MOVING EQUIPMENT ACCESSORIES

Finlay Mobile Crushers boast versatility and flexibility in application as well as in terms of movement in comparison to stationary crushing plants. Finlay has the right mobile crusher to meet your material reduction requirements in quarrying, mining, demolition and recycling applications.



ROCK DRILLING TOOLS & EQUIPMENTS

DTH HAMMERS & DRILL BITS FOR USE IN QUARRIES FOR BLAST HOLE DRILLING APPLICATION.



DTH HAMMERS: 'Lotus' brand Heavy duty and Reliable Valve-less and Valved DTH Hammers from 3.5" to 10" Diameter with most popular International shank designs compatible Atlas Copco, Ingersoll Rand, Sandvik Drill tech Mission etc, meeting international quality standards & specifications.

BUTTON BITS & TRICONE ROCK BITS: 4" to 20" Dia button bits compatible to for all major International brand DTH Hammers back up.

QUALITY ASSURANCE



It is our Motto & Humble Policy to provide best quality products to our overseas buyers and clients at most reasonable rates & within the stipulated delivery time. We supply all abovementioned products manufactured by reputed companies and OEM suppliers who supply and export these products to manufacturers in domestic and overseas markets.



TIRE PROTECTION

Sharp, edged rock, muddy and slippery surfaces are a great hazard to tires. Equipment downtime and loss of productivity are the result of sudden tire failure, using our tire protection chains will reduce your operating costs., lowering downtime and improve productivity. we carry local stock and provide support service for tire chain.





Address : Unit No. 3, Building #2104, Prince Abdul Majeed District, Jeddah -22432 ,

Phone & Fax

Phone : +966 12 216 0666
Fax : +966 12 625 2285

Online

Email : info@binharkil.com

Website : www.binharkil.com

HARDOX[®]
WEAR PART CENTER

